

M190 Hot Water Meter High Temp. Sizes 1" & 1 1/2"

Third-Party Products

From The Manufacturer of E-Mon D-Mon



Description

Operation . The H190 (MTH) is a multijet (inferential) impeller meter. The impeller and magnet are the only moving parts in the measuring chamber. The impeller movement is transferred by a magnetic coupling to the vacuumized and hermetically sealed register, which can be turned to any position for easy reading.

Installation . The meter must be installed in a clean pipeline, free from any foreign materials. The meter shall be installed with the direction of flow as indicated by the arrow cast in the meter case. The meter may be installed in horizontal or inclined lines up to 45°, with the register facing upward. Note, the meter must have 10 pipe diameters ahead of the unit and 5 after, of straight pipe, to insure proper flow through the meter.

Application . The meter is for use with hot water up to 266°F (130°C) and working pressure to 230 psi (16 bar). Both pressure loss and accuracy tests are made before shipment. No adjustments need be made before installation.

Construction . The meter consists of the main case, a strainer, a measuring chamber, an impeller, a removable top plate and O-ring with a magnetically driven register or register pulser assembly and securing ring. The main case is cast bronze with raised characters showing direction of flow. The securing ring secures the internal mechanism and top plate. The unit is sealed by the O-ring gasket. The measuring chamber is designed so the impeller/magnet transfers the flow to the register. The register is secured to the main case by the securing ring.

Model Numbers

Model	Size
H19010	1"
H19015	1 1/2"

Note: Meters supplied as indoor version with pulse output.

Specifications

	Size: 1"	1 1/2"
Min. Flow gpm + 5%	.31	.88
Low Flow gpm + 3%	1.23	3.52
Rec.Cont. Flow ± 1%	15.41	44.03
Peak Flow gpm ± 1%	30.82	88.06
Pressure Loss psi Min.	.14	.14
Pressure Loss psi Rec.	2.5	3.5
Pressure Loss psi Peak	7.25	14.5
Operating Pressure psi	230	230
Operating Temperature psi	266	266

Register Reading Smallest Qty

US Gallons	.01	.10
Cubic Meters	.10 Ltr.	10 Ltr.

Capacity of Register:

US Gallons (millions)	10	100
Cubic Meters (thousands)	100	100

Contact Closure/Pulser:

	IPG12	IPG12
US Gallons	1 Cont/Gal	1 Cont/10 Gal
Cubic Meters	1 Cont/10 Ltr	1 Cont/10 Ltr

Materials:

Main Case	Brass
Top Plate	Brass
Measuring Chamber	Ryton
O-ring	EPDN
Impeller	Ryton
Magnet	Ceramic
Strainer	Dyflor
Register	Noryl
Register Housing Lid	Polyamide
Register & Number	Noryl
Gearing Wheels	Noryl

DISCLAIMER

E-Mon does not manufacture the products described on this page. We do not provide a warranty with respect to products we do not manufacture, and Customer must rely on the representations and warranties, if any, provided by the manufacturer of such product. We reserve the right to make changes to our products or to discontinue any product or service without notice.

M190 Hot Water Meter Sizes 1" and 1 1/2"

Third-Party Products From The Manufacturer of E-Mon D-Mon

Register. The register is a dust and waterproof hermetically sealed unit (no condensation is caused by variation of temperature). The register can be turned to any position for easy reading.

Pulser. The IPG12 pulser consists of a molded insert with a clear housing to read the totalizing register. The pulse element is a dry contact reed switch rated at 4 watts, maximum voltage: 42V DC/AC, 20 OHM resistance. This unit requires power from an external source and normally is wired in series with no regard to polarity, approximately 9-10 feet of 2-wire unshielded cable exists in a sealed fitting.

Connections. The meter casing spuds have external straight threads conforming to ANSI B2.1. Bronze coupling nuts and tail-pieces are provided.

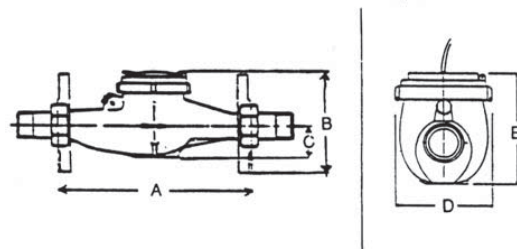
Pulser Wiring. The pulse element is a 4-watt rated reed switch which requires power from an external source. The unit is to be wired in series with no regard to polarity.

Note: Maximum voltage: 42 V DC/AC.

Protective resistance: 20 OHM

Dimensions and Net Weights

Meter Size	Dimensions (inches)					Weight	
	A	B	C	D	E	Reg	Pul
1"	10.25	4.50	1.57	3.82	5.0	6.5	7.0
1 1/2"	11.82	5.55	2.12	5.35	6.5	12.75	13.25



Register



Temperature/Pressure Rating

Temp. °F	32-150	200	230	250	266
MIN PSIG	-	6	25	45	62

*"MIN PSIG" is the minimum line pressure required to prevent flashing within the meter body.

DISCLAIMER

E-Mon does not manufacture the products described on this page. We do not provide a warranty with respect to products we do not manufacture, and Customer must rely on the representations and warranties, if any, provided by the manufacturer of such product. We reserve the right to make changes to our products or to discontinue any product or service without notice.

(800) 334-3666 - www.emon.com

Effective Date: 6/1/2007

E-Mon
Energy Monitoring Products