

H130 Hot Water Meter Size 3/4"

Third-Party Products

From The Manufacturer of E-Mon D-Mon



Description

Operation. The H130 (formerly 5UM-20) is a single-jet (inferential) impeller meter. The impeller movement is transferred by a magnetic coupling to the hermetically vacuum sealed register.

Installation. The meter must be installed in a clean pipeline, free from any foreign materials. The meter shall be installed with the direction of flow as indicated by the arrow cast in the meter case. The meter may be installed in horizontal or inclined lines, up to 45 degrees with the register facing upward. Note: The meter must have 10 pipe diameters ahead of the unit and 5 after of straight pipe to ensure proper flow through the meter. The meter is for use in hot water up to 195°F and working pressure to 150 psi. Both pressure loss and accuracy tests are made before shipment. No adjustments need be made before installation.

Construction. The meter consists of the main case, a driven register or register pulser assembly. The main case is cast brass with raised characters showing direction of flow. The top plate is made of PPO-Glass-Loaded and secured by a closing nut made of Polyacetal-Glass-Loaded which is threaded into the main case, sealed by the O-ring gasket. The main case is designed to house the impeller/magnet and transfers the flow to the register pulser. The register pulser is positioned to the top plate with expansion dowel pins and secured by a clamp made of Polyamide with a threaded securing pin and nut.

Model Numbers

Model	Size
H13034	3/4"

Note: Meters supplied as indoor version with pulse output.

Specifications

	Size:	3/4"
Min Flow (gpm) ± 5%		1/4
Low Flow (gpm) ± 2%		1
Recommended Continuous Flow (gpm) ± 2%		11
Peak Flow (gpm) ± 2%		22
Pressure Loss psi Min		0.1
Pressure Loss psi Low		0.5
Pressure Loss psi Cont		4
Pressure Loss psi Peak		13
Max Operating Pressure psi		150
Operating Temperature		195°F / 90°C
<u>Sweep Hand Register:</u>		
US Gallons		Red=x.1 Red=x 1 Red=x10
Cubic Meters		Red=x.001 Red=x.01 Red=x.1
<u>Capacity of Register/Pulser:</u>		
US Gallons (millions)		10
Cubic Meters (thousands)		100
<u>Contact/Closure (Pulser):</u>		
US Gallons		1 Contact/Gallon
Cubic Meters		1 Contact/1 Litre
<u>Materials:</u>		
Main Case		Brass
Top Plate		PPO-Glass-Loaded
O-ring		Rubber (Nitrile)
Impeller		Polyamide 12
Magnet		Ceramic (Ferrite)
Strainer		Polyacetal
Register		Plastic
Register Housing & Lid		Plastic
Reg Gearing & Number Wheels		Plastic
Lens		Polycarbonate High Impact
Pulser		Polycarbonate High Impact
Reed Switch		4 watt, 24 AC/DC voltage max., 0.2 Amp Current max., not to exceed 4 watts. Current limiting resistance in

DISCLAIMER

E-Mon does not manufacture the products described on this page. We do not provide a warranty with respect to products we do not manufacture, and Customer must rely on the representations and warranties, if any, provided by the manufacturer of such product. We reserve the right to make changes to our products or to discontinue any product or service without notice.

H130 Hot Water Meter Size 3/4"

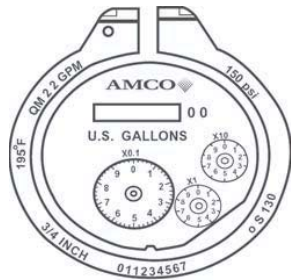
Third-Party Products From The Manufacturer of E-Mon D-Mon

Register. The register is dust and waterproof evacuated (no condensation caused by variation of temperature). The register is stationary and cannot be moved.

Pulser. The pulse unit consists of a clear housing with a register and cable exiting from the side of the register. The pulse element is a dry contact reed switch rated at 4 watts. This unit requires power from an external source and normally is wired in series with no regard to polarity. The unit has approximately 5 feet of 2-wire shielded cable exiting a sealed fitting. Note: The pulse unit cannot be repaired, however, the pulser can be replaced.

Connection. The meter casing spuds have external straight threads conforming to ANSI B2.1. Bronze coupling nuts and tail-pieces are provided. Add 5 1/8" to length for couplings.

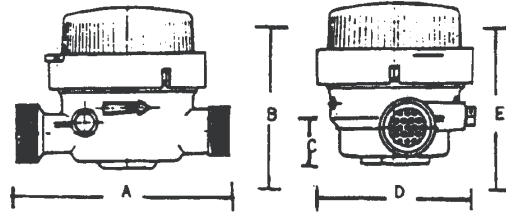
Pulse Wiring. The pulse element is a 4-watt rated reed switch which requires power from an external source. The unit is to be wired in series with no regard to polarity.



USG Register/Pulser

Dimensions and Net Weights

Meter Size	Dimensions (inches)					Weight (lbs.)	
	A Length	B Height w/Cap	C Center to Btm.	D Width	E Height w/Pulser w/o Cap	REGISTER	PULSER
3/4"	4.527	3.625	.787	3.25	3.500	1.50	1.75



Temperature/Pressure Rating

Temp °F	32-150	200	230	250
MIN PSIG	--	6	25	45

"MIN PSIG" is the minimum line pressure required to prevent flashing within the meter body.

DISCLAIMER

E-Mon does not manufacture the products described on this page. We do not provide a warranty with respect to products we do not manufacture, and Customer must rely on the representations and warranties, if any, provided by the manufacturer of such product. We reserve the right to make changes to our products or to discontinue any product or service without notice.