

Gas Meter with Pulse Output

Test Equipment
Depot
1-800-517-8431

A Third-Party Product

View at www.ElectricSubMeter.com

Description

The 200CFGM gas meter is a remarkably small, lightweight meter ideally suited to residential submetering applications. Despite its small size, the meter is incredibly accurate and reliable when measuring either natural or LP gas. The 200CFGM is classified as a 200 cubic foot per hour (cfh) non-temperature compensated gas meter with cyclometer register.



The design consists of four measuring chambers separated by synthetic diaphragms. The chambers are filled and emptied periodically and the movement of the diaphragm is transferred via a gear to the crankshaft. This shaft moves the valves that measure the volumetric gas flow. Rotations of the gear are transferred via a magnetic coupling to the index, thus assuring proper sealing of the meter's internal mechanisms. The register includes a reed pulse output for interfacing with remote (hard-wire, telephone, radio) reading and collection devices. Please note that the 200CFGM is intended for indoor use only.

Model Numbers

200CFGM

Specifications

Performance:

Max Flow Rate (cfh)	200
Min Flow Rate (cfh)	1.4
Max Working Pressure (psi)	5
Operating Temperature	-4°F - 122°F
Register Capacity (ft ³)	9999999.9

Contact Closure:

Pulses/ft ³	1/1
------------------------	-----

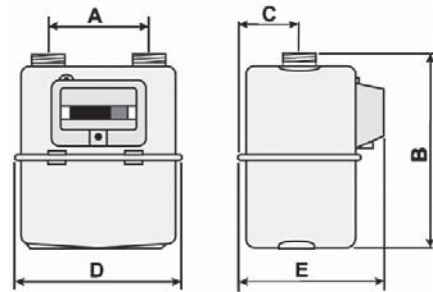
Electrical Ratings:

Maximum Voltage	12 VDC
Maximum Current	10 mA
Resistor	None
Duty Cycle	10% On

Physical:

Case Material	Aluminum
Exterior Finish	Powder-coated
Connection Type	Sprague #1
Gland/Cable (Supplied)	6' of 4-wire
Wire Connections	Green/brown are pulse (N/O) Yellow/white are tamper (N/C)

Dimensions



Dimensions (inches)					Weight (lbs)	Connection threads
A	B	C	D	E		
6.0	8.5	2.6	7.6	6.5	4.5	Sprague #1

NOTE: The 200CFGM requires connectors for installation in the gas line. To purchase these connectors, contact SGS directly at (800) 526-0747.

DISCLAIMER

Neither E-Mon nor Hunt Power manufactures the products described on this page. We do not provide a warranty with respect to products we do not manufacture, and Customer must rely on the representations and warranties, if any, provided by the manufacturer of such product. We reserve the right to make changes to our products or to discontinue any product or service without notice.

A Division of
Hunt
POWER

Test Equipment Depot - 800.517.8431 - 99 Washington Street Melrose, MA 02176

FAX 781.665.0780 - TestEquipmentDepot.com

E-Mon®

Effective Date 6/1/2006